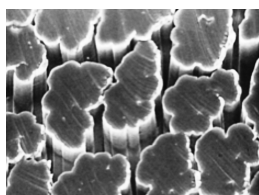


# The characteristic of Viscose Rayon “CORONA” for wet laid nonwoven

Recycled fiber from wooden pulp ,  
“Viscose Rayon” is also used for wet laid nonwoven application extensively  
with utilizing hydrophilic property.

## ■ Regular type

Viscose Rayon possess fundamental shape and property for paper application



## ■ Tow type

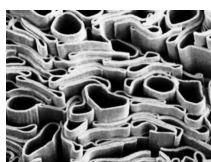
Regular type available in Tow form for flocky processing.

## ■ Dope-dyed type is available

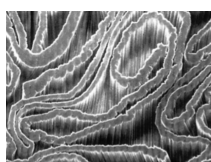
A type of kneaded pigment into fiber

## ■ Special cross section types

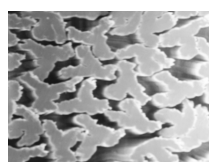
Four types with different cross sections are available , each having it's original special luster.



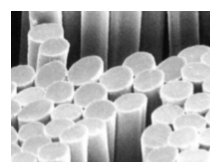
▲Hollow & Flat



▲Ribbon & Flat



▲High water-absorbency (Y-Character)



▲Super bright luster and deep shade

## 「CORONA」product list for wet laid nonwoven

Types	Decitex <sub>(dtex)</sub>	Fiber length <sub>(mm)</sub>	Remarks	
S B	0.45~17.0	3~30	Bright	15kg
S D	0.8~17.0	3~30	Dull	15kg
S BH	1.7, 5.6, 17.0	3~30	Hollow & Flat	10, 12kg
S BR	22, 56, 83, 170, 330	3~30	Ribbon & Flat	10, 12kg
T B	0.3~17.0	—	Bright (Tow)	15, 18kg
T D	0.8~17.0	—	Dull (Tow)	15, 18kg
S BA	1.9, 2.2, 3.3, 7.8	3~25	High Water-Absorbency	12, 14kg
A SB	1.7~17.0	3~30	Anti-Bacterial and Deodorant	15kg
S BO	0.8~2.2	—	Super-Bright and Deep shade	15kg
G T	1.7~17.0	3~30	Dope-dyed	15kg

## Daiwabo Rayon Co., Ltd.

Midosuji Daiwa Bldg. 6-8, Kyutaromachi 3-chome, Chuo-ku, Osaka, 541-0056, Japan  
Mail: dr-kanri@daiwaborayon.co.jp FAX: +81-6-7635-3291

<https://daiwaborayon.co.jp/english/>

