

Offering Good Adhesion to Skin

Microfiber Viscose Rayon

SOFTRAY™

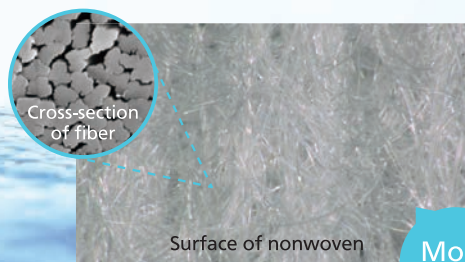
SOFTRAY (0.6dtex *) is one of the finest fibers of regenerated cellulose fibers.

*Generally the thickness of a human hair is about 56dtex.

Point 1

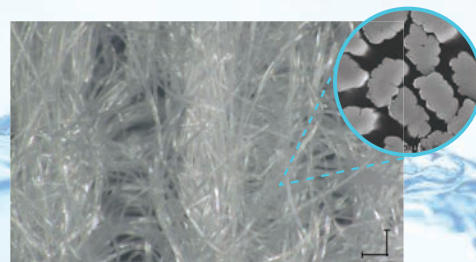
Adhesive Property

The finely textured microfiber viscose rayon adheres to the skin.



Surface of nonwoven
SOFTRAY(0.6dtex)

More dense



General-purpose product(1.7dtex)

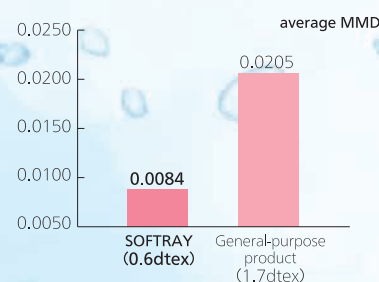
Point 2

Smoothness

Soft feeling to the skin achieved by the microfiber viscose rayon

Test Method: KES method (evaluation of surface characteristics)
Test Laboratory: KAKEN TEST CENTER General Incorporated Foundation
Test Sample: Spunlace nonwoven fabric of 55g/m²

[Note] MMD(fluctuation of frictional coefficient): The lower the measurement value gets, the higher the smoothness becomes and the lower the roughness becomes.

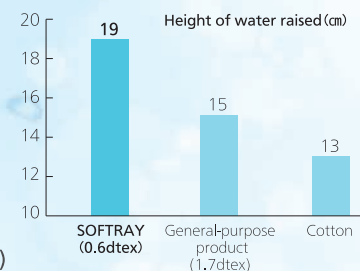


Point 3

Liquid Absorbing Property

Capillary action of the microfiber viscose rayon improves absorption speed.

Test Method: Compliant with JIS L 1907 Test Method for Water Absorbency(Byreck method)
Test Laboratory: Masuda Mill, Daiwabo Rayon
Test Sample: Spunlace nonwoven fabric of 60g/m² weight
Test Condition: ① Immerse the lower 5cm of the sample in water
② Leave it for 5 minutes and measure the level of water absorbed (repeat twice)



Daiwabo Rayon Co., Ltd.

Midosuji Daiwa Bldg. 6-8, Kyutaramachi 3-chome, Chuo-ku, Osaka, 541-0056, Japan
Mail: dr-kanri@daiwaborayon.co.jp FAX: +81-6-7635-3291

http://www.daiwabo.co.jp/rayon/en_index.html

"SOFTRAY" is Daiwabo's trademark in Japan